



CRYOGENIC PRODUCTS & SERVICES

Design

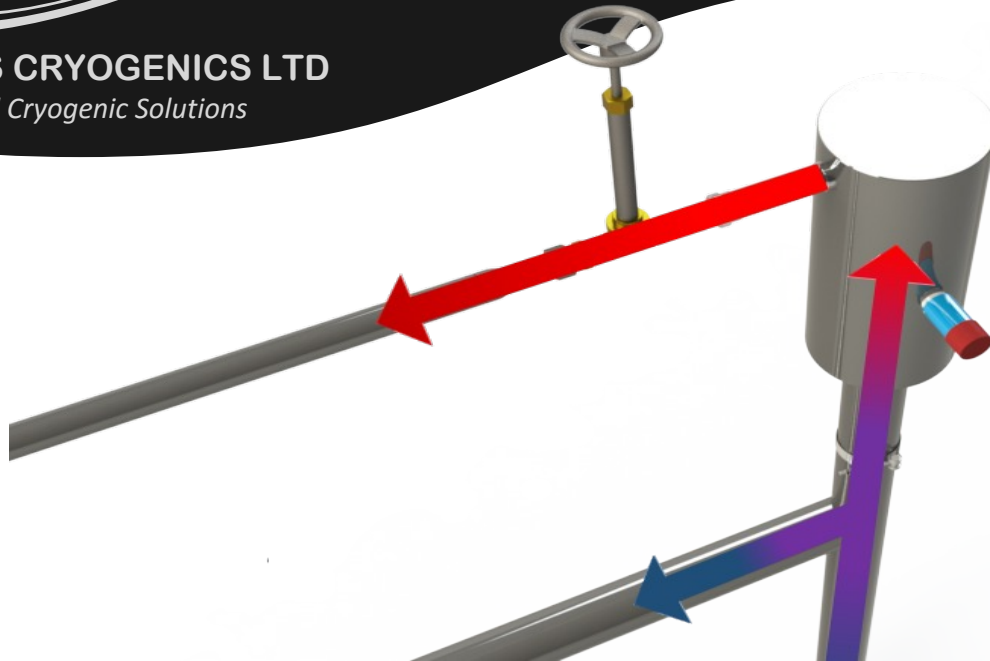
Installation

Service

Inspection

THAMES CRYOGENICS LTD

Total Cryogenic Solutions



VENT UNIT

The vent unit acts as a phase separator for liquid nitrogen by removing gaseous nitrogen from the piping in which it is installed it ensures cold, rapid liquid response at outlets. The unit comprises a small vacuum insulated buffer vessel, with a float-operated vent valve. It is positioned at the high point of the line so that all vapour formed in the pipework rises into the buffer vessel and is released by the vent valve.

Key Features

- Made to order to fit almost any pipe.
- Can outlet via a vent line to an ambient vaporiser to avoid buildup of ice or the dispensing of dangerously cold gas.
- The vent valve orifice is approximately 3 mm, small compared with the line size, so pressure fluctuations are minimal.
- Mounted on a vacuum super insulated mechanical coupling for ease of removal and replacement.

Applications

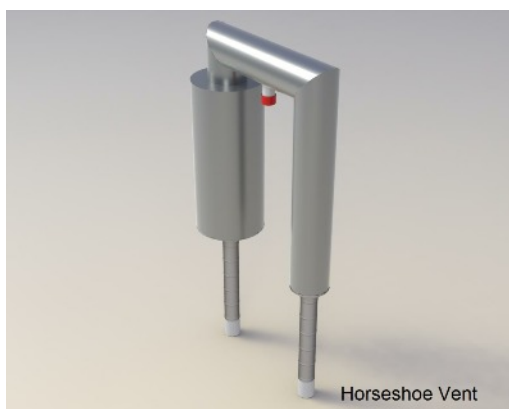
Vent units are used in any application where the quality of the liquid gas is important. Low flow rate systems such as stress screening or dosing are prime conditions for vent units.

www.thamescryogenics.com

Email: sales@thamescryogenics.com

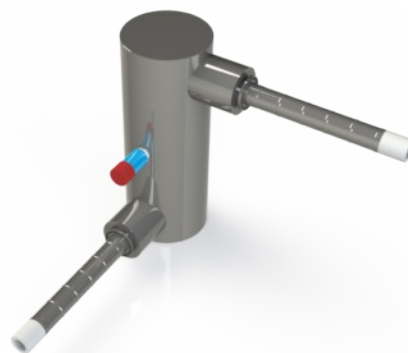
Tel: +44 (0)1235 815777

Materials of Construction	Austenitic Stainless Steel types 304/321/316
Contraction Compensation	Internal Bellows assembly
Jacket Protection	Combined evacuation/relief port
Maximum Operating Pressure Differential	10 bar g
Design Pressure	18.15 bar g
Test Pressure	20.1 bar g



Horseshoe Vent

Horseshoe vent units have vacuum insulated inlets and outlets so vent line can be run in SIVL in areas where a lagged line would not be appropriate.



Side Entry Vent Unit allows the same great results without the vertical height requirements of the standard vent unit, can be with or without vacuum insulated output.